



NOTES

1. Verifying Dimensions.
The contractor shall verify dimensions against such other drawings or site conditions as pertain to this part of the work.
2. Existing Services.
Any information concerning the location of existing services indicated on this drawing is intended for general guidance only. It shall be the responsibility of the contractor to determine and verify the exact horizontal and vertical alignment of all cables, pipes, etc. (both underground and overhead) before work commences.

Legend








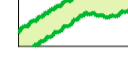
-  Existing Trees to be retained and protected in accordance with BS 5837:2012
-  Existing sections of hedgerow to be retained and incorporated into the proposals
-  Existing trees to be removed to facilitate access and development
-  Existing sections of hedgerow to be removed to facilitate access and development
-  Proposed standard tree planting (Refer Table 1 on this sheet)
-  Proposed hedgerow planting comprised of locally appropriate native species (Refer Table 2 on this sheet)
-  Proposed Woodland planting (Refer Table 3 on this sheet)
-  Proposed Seeding Areas (Refer Table 4 on this sheet)

Table 1 - Specimen Tree Planting Schedule

Common Name	Botanical Name	Form/ Habit	Transplanted	Height (M)	Girth (cm)	Root Condition	Clear Stem (M)
Alder	<i>Alnus glutinosa</i>	Standard Tree	2x	3.0 - 3.5	10 - 12	Bare root	1.75 - 2.0m
Birch	<i>Betula pendula</i>	Standard Tree	2x	3.0 - 3.5	10 - 12	Bare root	1.75 - 2.0m
Beech	<i>Fagus sylvatica</i>	Standard Tree	2x	3.0 - 3.5	10 - 12	Bare root	1.75 - 2.0m
Cherry	<i>Prunus avium</i>	Standard Tree	2x	3.0 - 3.5	10 - 12	Bare root	1.75 0 2.0m

Table 2 - Hedge Planting Schedule, double staggered

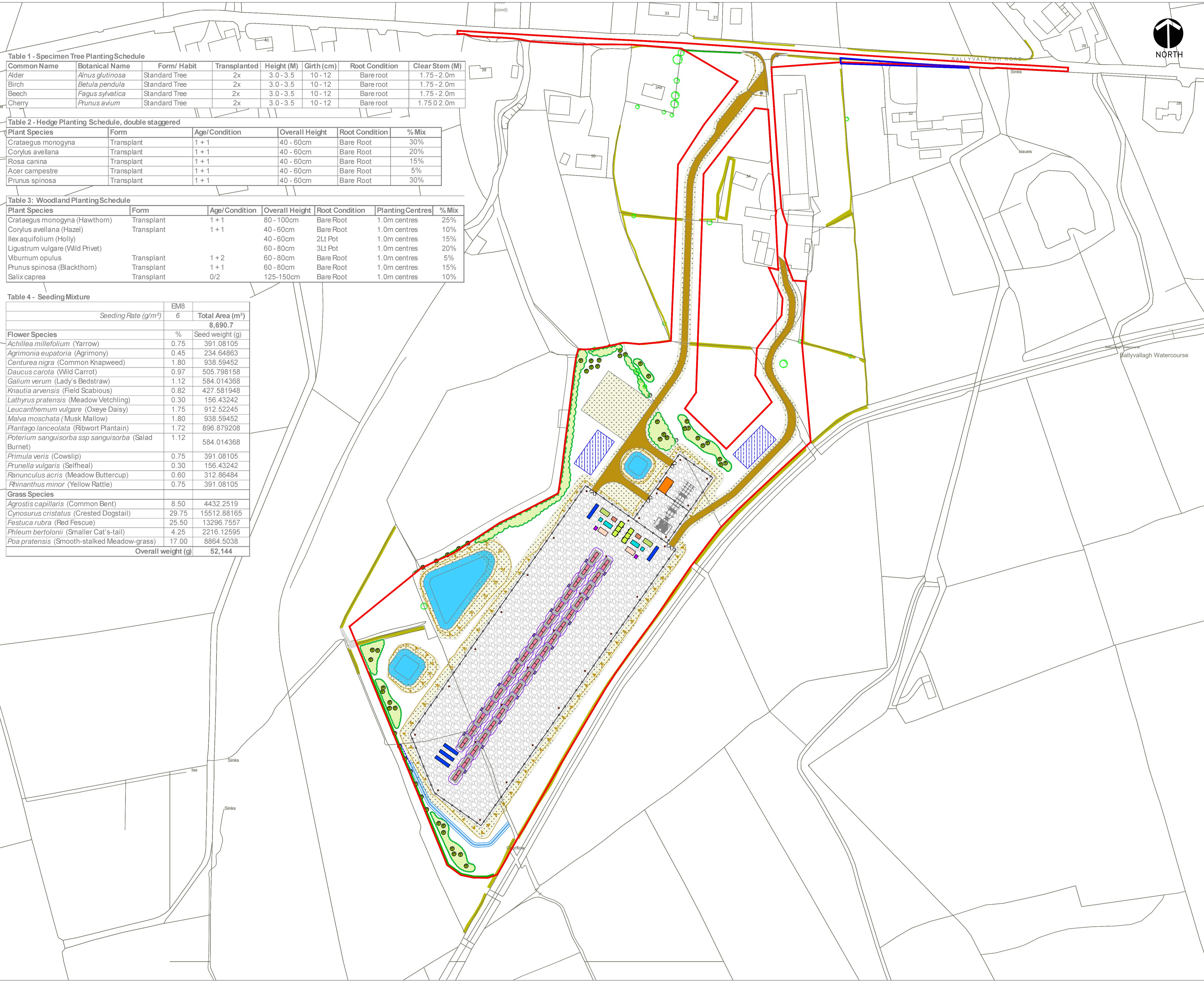
Plant Species	Form	Age/Condition	Overall Height	Root Condition	% Mix
<i>Crataegus monogyna</i>	Transplant	1 + 1	40 - 60cm	Bare Root	30%
<i>Corylus avellana</i>	Transplant	1 + 1	40 - 60cm	Bare Root	20%
<i>Rosa canina</i>	Transplant	1 + 1	40 - 60cm	Bare Root	15%
<i>Acer campestre</i>	Transplant	1 + 1	40 - 60cm	Bare Root	5%
<i>Prunus spinosa</i>	Transplant	1 + 1	40 - 60cm	Bare Root	30%

Table 3: Woodland Planting Schedule

Plant Species	Form	Age/Condition	Overall Height	Root Condition	Planting Centres	% Mix
<i>Crataegus monogyna</i> (Hawthorn)	Transplant	1 + 1	80 - 100cm	Bare Root	1.0m centres	25%
<i>Corylus avellana</i> (Hazel)	Transplant	1 + 1	40 - 60cm	Bare Root	1.0m centres	10%
<i>Ilex aquifolium</i> (Holly)			40 - 60cm	2Lt Pot	1.0m centres	15%
<i>Ligustrum vulgare</i> (Wild Privet)			60 - 80cm	3Lt Pot	1.0m centres	20%
<i>Viburnum opulus</i>	Transplant	1 + 2	60 - 80cm	Bare Root	1.0m centres	5%
<i>Prunus spinosa</i> (Blackthorn)	Transplant	1 + 1	60 - 80cm	Bare Root	1.0m centres	15%
<i>Salix caprea</i>	Transplant	0/2	125-150cm	Bare Root	1.0m centres	10%

Table 4 - Seeding Mixture

Seeding Rate (g/m ²)	EM8	Total Area (m ²)
6		8,690.7
Flower Species		
	%	Seed weight (g)
<i>Achillea millefolium</i> (Yarrow)	0.75	391.08105
<i>Agrimonia eupatoria</i> (Agrimony)	0.45	234.64863
<i>Centurea nigra</i> (Common Knapweed)	1.80	938.59452
<i>Daucus carota</i> (Wild Carrot)	0.97	505.798158
<i>Galium verum</i> (Lady's Bedstraw)	1.12	584.014368
<i>Knautia arvensis</i> (Field Scabious)	0.82	427.581948
<i>Lathyrus pratensis</i> (Meadow Vetchling)	0.30	156.43242
<i>Leucanthemum vulgare</i> (Oxeye Daisy)	1.75	912.52245
<i>Malva moschata</i> (Musk Mallow)	1.80	938.59452
<i>Plantago lanceolata</i> (Ribwort Plantain)	1.72	896.879208
<i>Poterium sanguisorba ssp sanguisorba</i> (Salad Burnet)	1.12	584.014368
<i>Primula veris</i> (Cowslip)	0.75	391.08105
<i>Prunella vulgaris</i> (Selfheal)	0.30	156.43242
<i>Ranunculus acris</i> (Meadow Buttercup)	0.60	312.86484
<i>Rhinanthus minor</i> (Yellow Rattle)	0.75	391.08105
Grass Species		
<i>Agrostis capillaris</i> (Common Bent)	8.50	4432.2519
<i>Cynosurus cristatus</i> (Crested Dogstail)	29.75	15512.88165
<i>Festuca rubra</i> (Red Fescue)	25.50	13296.7557
<i>Phleum bertolonii</i> (Smaller Cat's-tail)	4.25	2216.12595
<i>Poa pratensis</i> (Smooth-stalked Meadow-grass)	17.00	8864.5038
Overall weight (g)		52,144



Drawing 24

01	layout update	check	date
rev	amendments	check	date

rps A TETRA TECH COMPANY
 Elmwood House
 74 Boucher Road
 Belfast
 BT12 6RZ
 T +44 (0) 28 90 667914
 F +44 (0) 28 90 668286
 W www.rpsgroup.com/ireland
 E ireland@rpsgroup.com

Client


Project
 Ballyross

Title
 Landscape Mitigation Plan

Project Number	Sheet Size	Drawing Scale
02964	A1	1:1250

Drawing Number
028964.5.01

Drawn By	Status	Revision
SA	DRAFT	-

Checked By	Approved By	Date
-	-	29/01/2025